

### description

RBD Instruments' AugerMap 2 software enhances PHI® systems with state-of-the-art imaging and control. AugerMap 2 allows you to acquire high-resolution (up to 1024 x 1024) video and elemental images using an easy-to-use Windows® interface. You can now produce photo-quality images from your PHI system, and easily integrate those images into your publications using standard formats. AugerMap 2 offers enhanced project management, advanced image manipulation, viewing of images during acquisition, and improved control of 660 systems.

### PHI® Surface Analysis Systems Supported Include:

#### Scanning Auger:

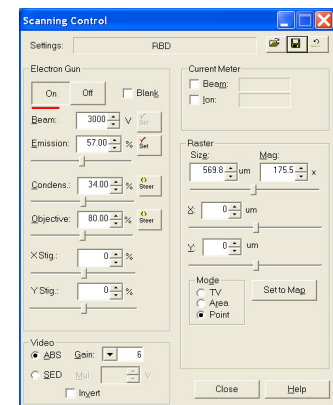
545, 590, 595, 600, 610, 660, 4100, 4300

#### AES & XPS:

560, 570, 5500, 5600

*\*PHI is a registered trademark of Physical Electronics*

### Scanning Control



### benefits

- Quickly renders high-contrast, high-resolution images
- Image formats compatible with all third-party imaging software
- Replaces antiquated photo scope, cameras, etc.
- Simple-to-use interface
- Scanning control tracks all settings for simple on/off procedure
- Real-time image display on your PC monitor (660 systems or PCMAPII with Direct Imaging Option)

# software specifications

## superb imaging

- Acquire maps at up to 1024 x 1024 resolution
- Journal-quality graphics
- Automatic quantization/threshold limits produce high contrast images

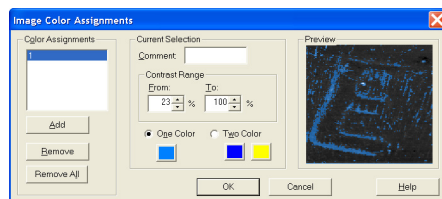
## advanced features

- ABS & SED video digital photos
- Real-time imaging on your PC with 660 systems or using a PCMAPII with the Direct Imaging Option
- Viewing of image maps during acquisition
- Image enhancements including noise reduction, sharpening, degrading, edge detection, contrast, gamma, and invert
- Image colorization and composite overlays
- Multiple point, line, and area acquisitions
- Integrated with AugerScan for point and area acquisitions
- Set acquisition parameters individually for each element
- Point and click control of map area size and position
- Zoom and Print Preview
- Redesigned scanning control dialog box
- Advanced project manager
- Micron markers
- Annotate images using any combination of fonts and colors

## compatibility

- Images can be easily exported as bitmaps, or copied to the clipboard for use in word processing, desktop publishing, or web authoring applications.

*Color Assignment Editor*



*Composite Image Editor*

