

### description

RBD Instruments' AugerScan 3 software is the premier data acquisition and analysis software for PHI® Auger, XPS, and SIMS systems. AugerScan 3 includes many new features including interactive peak marking, enhanced toolbars, export to CasaXPS, and improved SIMS hardware control and data analysis. Additionally, updates to AugerScan 3 are available on the RBD website.

AugerScan is an integral part of RBD's PC upgrade packages, all of which enhance your system at an affordable price.

#### PHI® Surface Analysis Systems Supported Include:

**Auger:** 3017 3057 3067 540 545 590 595 600 610 650  
660 4000C 4100 4200 4300

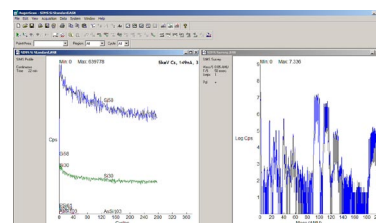
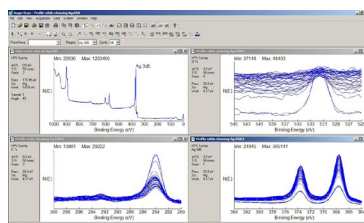
**XPS:** 548 549 550 560 570 3027 5000 5100 5300 5400  
5500 5600 5700 LS versions

**SIMS:** 3600 6100 6300 6600

*\*PHI is a registered trademark of Physical Electronics*

### benefits

- **Versatile:**
  - \* Collects and analyzes data for Auger, XPS, and SIMS.
  - \* Curve fitting, atomic concentration, and data massage capabilities are integrated into one software package.
- **Professional Results:** Produces customizable publication-quality graphics.
- **Easy to use:** Point-and-click acquisition control.
- **Communicate results easily:** Export data in a variety of formats.



# software specifications

data acquisition	<ul style="list-style-type: none"><li>• Auger, XPS, and SIMS are supported</li><li>• Alignment, Survey, Multiplex, Depth Profile, 3-point Depth Profile acquisitions are supported</li><li>• “Continue Acquisition” option available for most acquisition modes</li><li>• Multiple point and area acquisitions are available when AugerScan is used with RBD’s AugerMap software</li><li>• All Multiplexes and Depth Profile acquisition regions can be viewed simultaneously</li><li>• “End of Acquisition” audio alarm option</li></ul>
graphing options	<ul style="list-style-type: none"><li>• Log scale for SIMS surveys and depth profiles</li><li>• Depth Profiles: Graph single cycle or all cycles; display X-axis in cycles, time, or depth</li><li>• Multiplexes: Bar graphs are available to display peak height or atomic concentration</li><li>• Color, line, and width customizations are available for all graphs</li><li>• Independent selection of fonts for graph title and axes</li><li>• Fully customizable annotations</li></ul>
data analysis and transformation	<ul style="list-style-type: none"><li>• Differentiate, smooth, “Depth Profile” smooth</li><li>• Surveys: Select and mark peaks using keyboard or mouse; option to save/load marker lists</li><li>• Edit element table while marking peaks</li><li>• Flag active markers for atomic concentration analysis</li><li>• Atomic concentration available for surveys, multiplexes, and depth profiles</li><li>• XPS baseline identification, deconvolution, and satellite subtraction</li><li>• XPS Curve Fitting includes: Gaussian, Gaussian-Lorentz, and asymmetric Gaussian-Lorentz curves; doublet locking, invariance setting, and individual parameter locking</li><li>• SIMS atomic density transformation; ability to calculate RSFs</li><li>• Revert to raw data at any time</li><li>• Edit limits of surveys, multiplex regions, and depth profile regions</li><li>• Edit depth profile cycles, regions</li><li>• Switch between counts and counts/sec</li></ul>
view options	<ul style="list-style-type: none"><li>• View raw or transformed data</li><li>• Customizable fonts, line styles, colors</li><li>• Open multiple acquisitions in different windows</li><li>• Display peak height and region data simultaneously</li><li>• Preview printouts</li><li>• Scroll through depth profile regions and cycles using keyboard arrow keys</li><li>• Zoom any window, including depth profiles</li></ul>
compatibility	<ul style="list-style-type: none"><li>• Open AugerScan 2.x files; ASCII import of AugerScan 1.x files</li><li>• Export to ASCII, DIF, MultiPak, CasaXPS; batch export option</li><li>• Copy acquisitions to the clipboard and into other applications, including Microsoft™ Word® and PowerPoint®</li><li>• Embed objects such as graphs and word processor documents in an AugerScan window</li><li>• Copy data from AugerScan and paste it directly into CasaXPS</li><li>• Send data via email using your default email program</li></ul>
advanced features	<ul style="list-style-type: none"><li>• Multithreading: Perform data analysis in one window and acquire data in another</li><li>• Built-in event scheduler provides automation for stage control and data acquisition</li><li>• Drag-and-drop interface with Windows desktop</li><li>• Floating toolbars</li><li>• Ability to edit built-in Auger, XPS, and SIMS element tables</li><li>• Automatic voltage optimization with Auto EMS</li><li>• Complete stage control for automated stages</li><li>• Fully Windows® compatible</li><li>• Complete context-sensitive Help system</li></ul>

